

A good hiking trail leads to the Tippin Rock and Hewes Hill cliffs. The trail starts in a hay-field on Warmac Road, rises up to the Tippin Rock, continues on to a stunning lookout, and then makes its way across the top of the cliffs. The trail to Tippin Rock from the field is about 1/2 a mile and an easy walk with an elevation gain of 320 feet. From the field to the ledges outlook and back is 1.8 miles, round trip.

Along the trail can be seen well-managed forests of oak, pine, and an occasional young chestnut making a comeback. Hikers can watch for warblers, wildflowers and ferns.

Visitors are reminded to remain on marked trails and to stay away from active agricultural fields and wood harvesting operations.

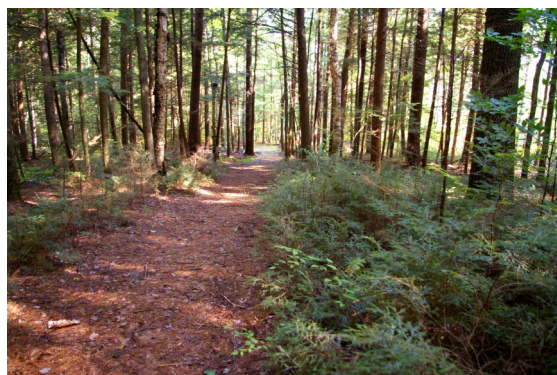


Tippin Rock today



Tippin Rock in years past

Guide to the Tippin Rock Farm Trail Swanzey, New Hampshire



Tippin Rock Farm Trail



Hewes Hill

Respectful hikers, snowshoers, and cross-country skiers are welcome on Hewes Hill. Those who reach the top are rewarded with spectacular vistas of undeveloped wooded hillsides. The outlook is also a great place for bird-watching especially during migration seasons in spring and fall. Those who are willing to carry in a light lunch will enjoy picnicking as well.

Tippin Rock

Perched on a sheet of granite lies a 40-ton rounded boulder. Tippin Rock is a massive glacial erratic boulder that can be made to sway gently with a shove of the shoulder in just the right place. It has been a hiking destination for more than a century.

Find the trail to Tippin Rock from a hayfield on Warmac Road across from Chebaco Kennel.

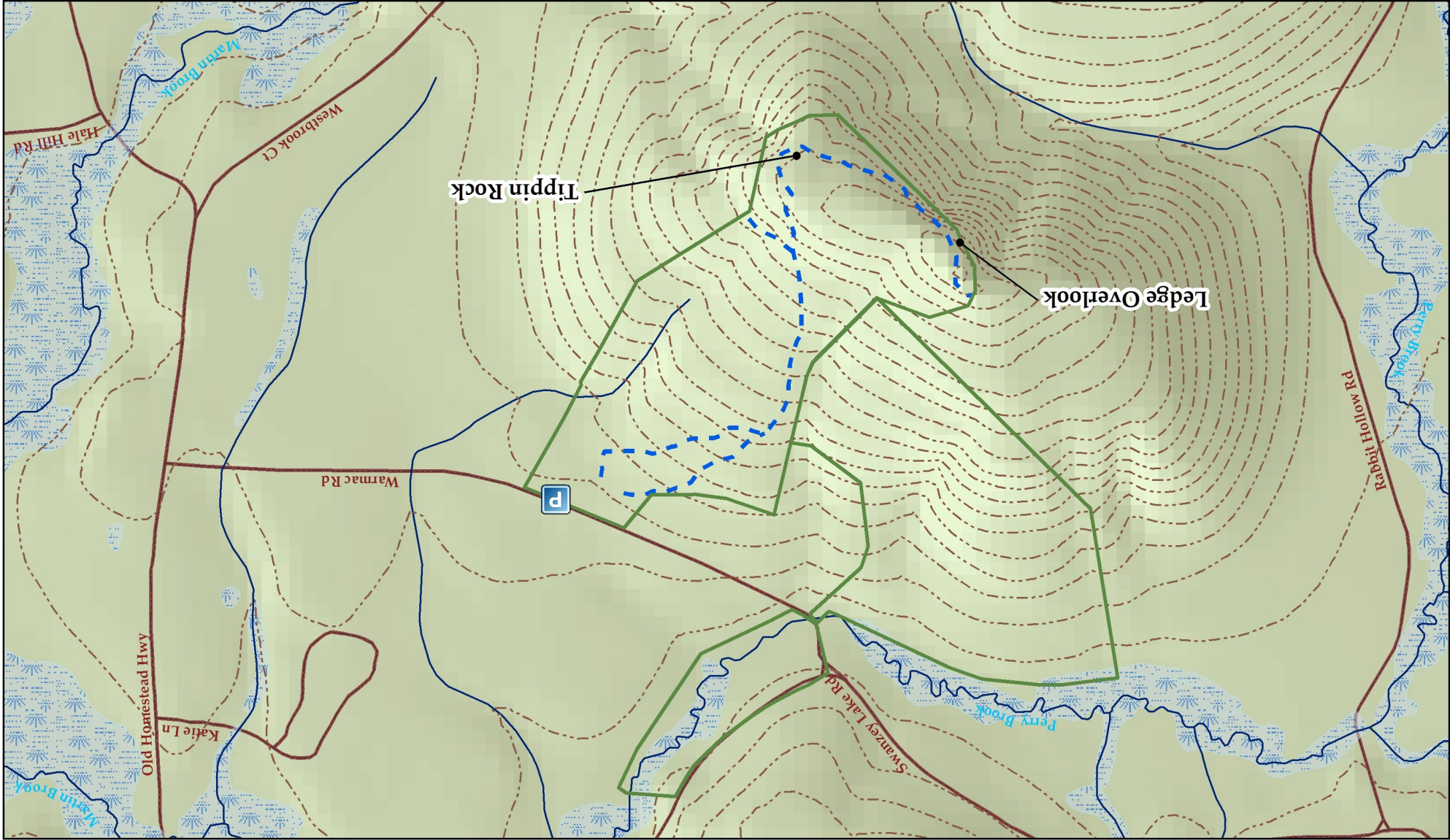


View from the outlook

Rules of Use:

- **No overnight camping**
- **No campfires**
- **No Off-road motorized vehicles**

Tippin Rock Farm Conservation Easements, Swanzezy: Hiking Trails



- Tippin Rock Farm Conservation Easements
- Tippin Rock Farm Trails (blazed in blue)
- 20' Contours

E. Hague, 6.23.11, Sources: GRANIT & SWRPC
 Projection: NAD 83, NHSP feet. Map not survey accurate.

To the Tippin Rock Farm Trail:
 From Route 32 South in Swanzezy, turn right on Warmac Road. Travel about 1/2 mile and look for an opening in a hay field on the left, across from Chebaco Kennels. Pull into the field opening (not all the way into the field) and park, or park along the shoulder of Warmac Road. The beginning of the Tippin Rock Trail is in the back right corner of the field, blazed in blue.

1:10,000